

IPv6 *Subnetting*





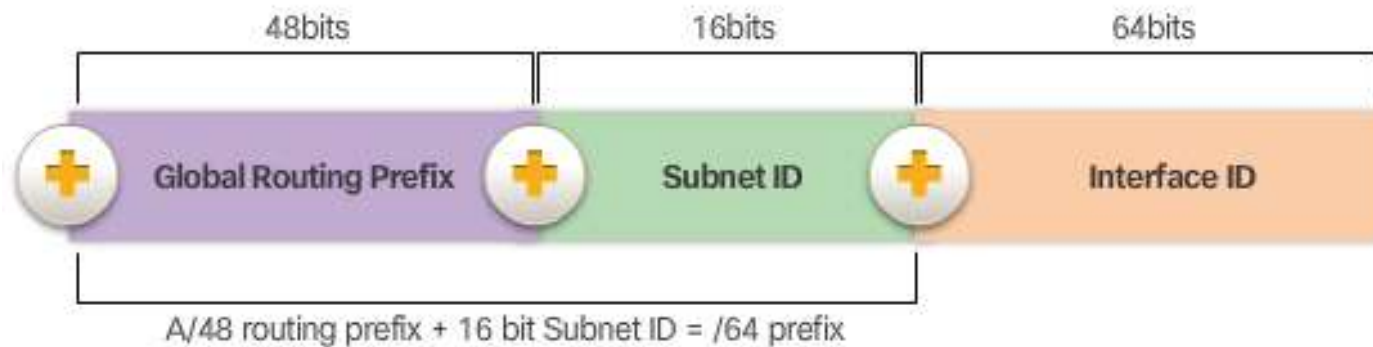
Conținut

- ✓ Adrese IPv6 Global Unicast
- ✓ Împărțirea în sub-rețele folosind *Subnet ID*



Adrese IPv6 global unicast

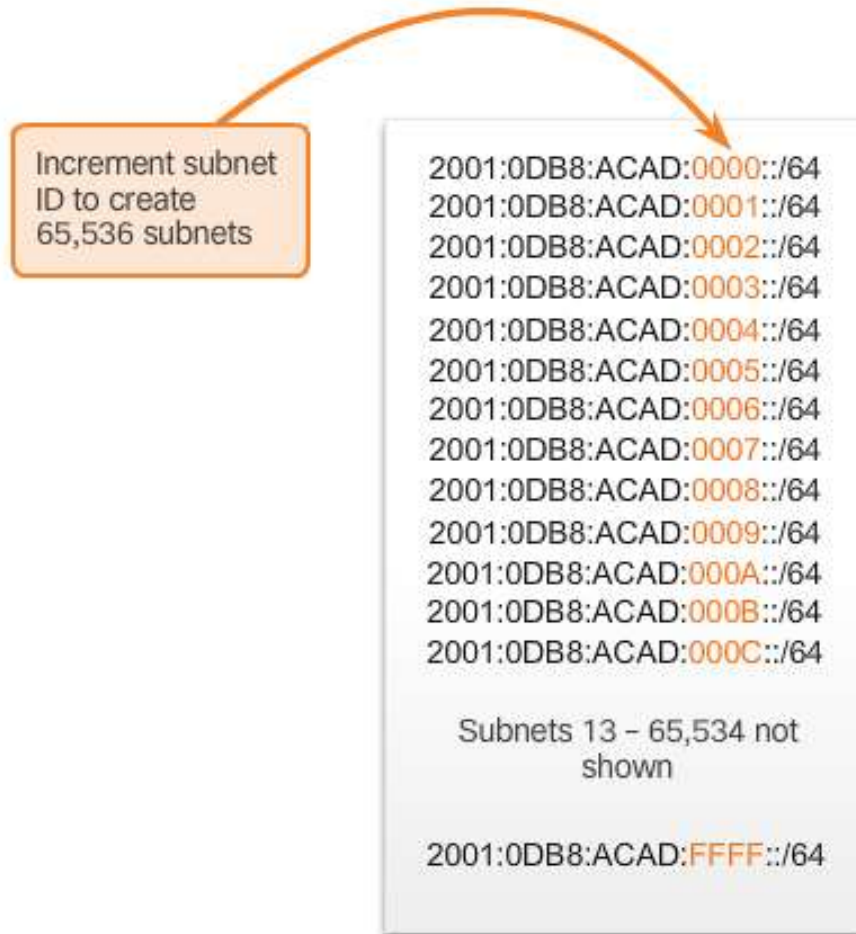
IPv6 Global Unicast Address Structure





Subnetting using the subnet ID

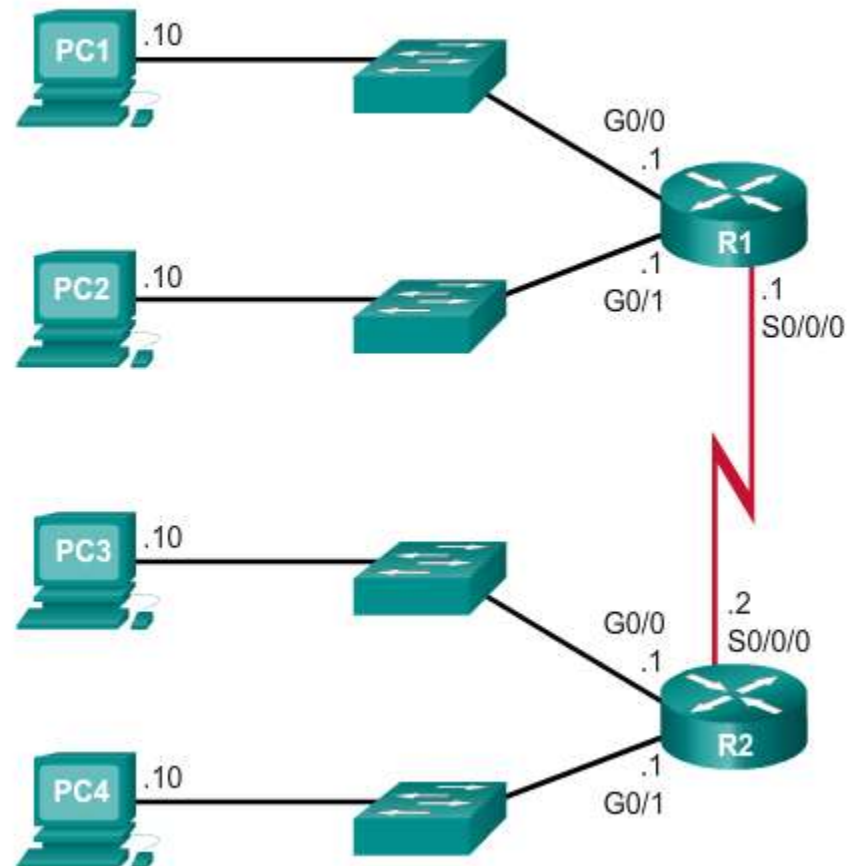
Address Block: 2001:0DB8:ACAD::/48





IPv6 Subnet Allocation – Fig 1

Example Topology





IPv6 Subnet Allocation – Fig 2

IPv6 Subnetting

Address Block: 2001:0DB8:ACAD::/48

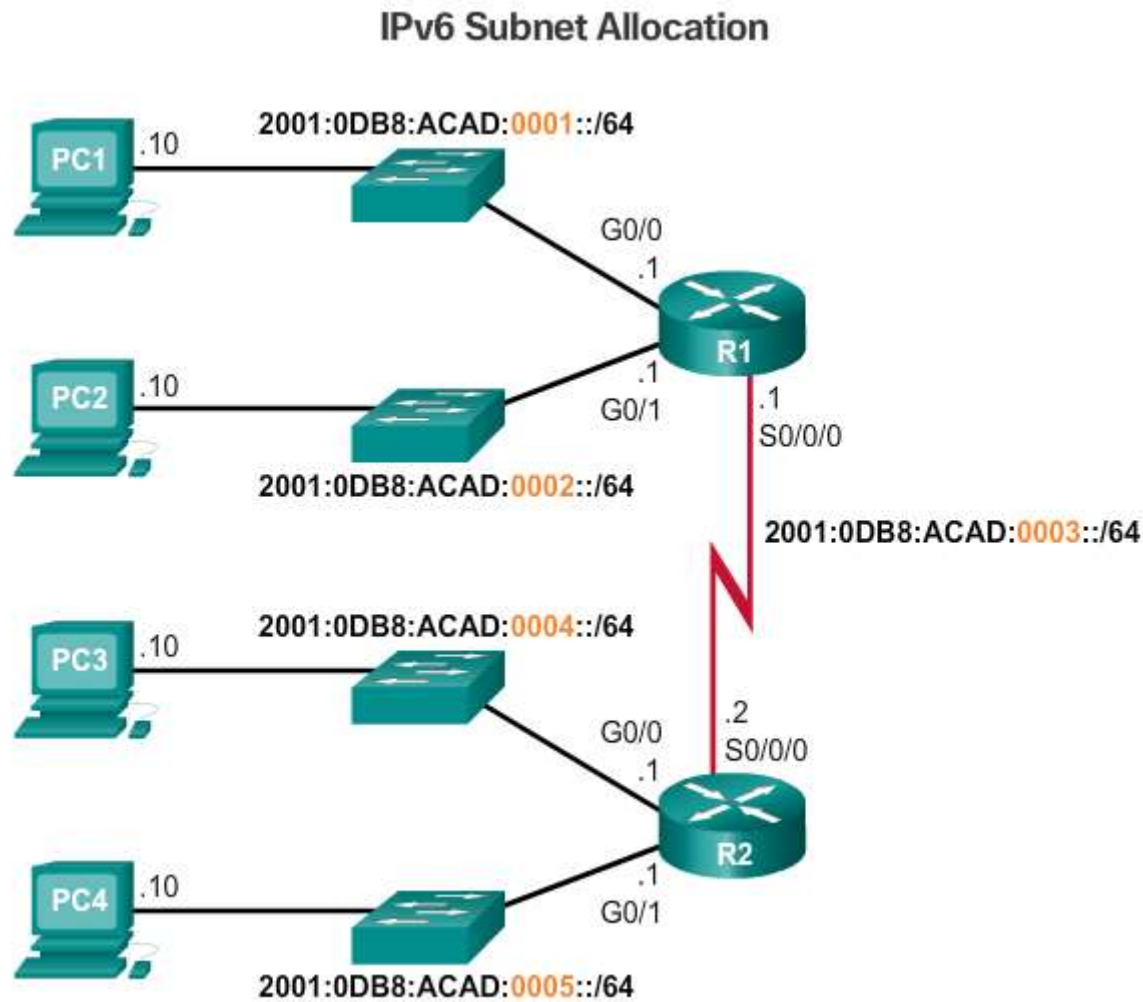
5 subnets allocated
from 65,536
available subnets

```

2001:0DB8:ACAD:0000::/64
2001:0DB8:ACAD:0001::/64
2001:0DB8:ACAD:0002::/64
2001:0DB8:ACAD:0003::/64
2001:0DB8:ACAD:0004::/64
2001:0DB8:ACAD:0005::/64
2001:0DB8:ACAD:0006::/64
2001:0DB8:ACAD:0007::/64
2001:0DB8:ACAD:0008::/64
⋮
2001:0DB8:ACAD:FFFF::/64
    
```



IPv6 Subnet Allocation – Fig 3





IPv6 Subnet Allocation – Fig 4

IPv6 Address Configuration



```
R1(config)# interface gigabitethernet 0/0
R1(config-if)# ipv6 address 2001:db8:acad:1::1/64
R1(config-if)# exit
R1(config)# interface gigabitethernet 0/1
R1(config-if)# ipv6 address 2001:db8:acad:2::1/64
R1(config-if)# exit
R1(config)# interface serial 0/0/0
R1(config-if)# ipv6 address 2001:db8:acad:3::1/64
R1(config-if)# end
R1#
```